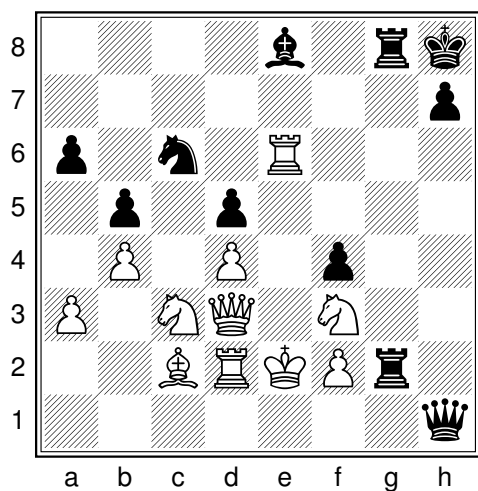


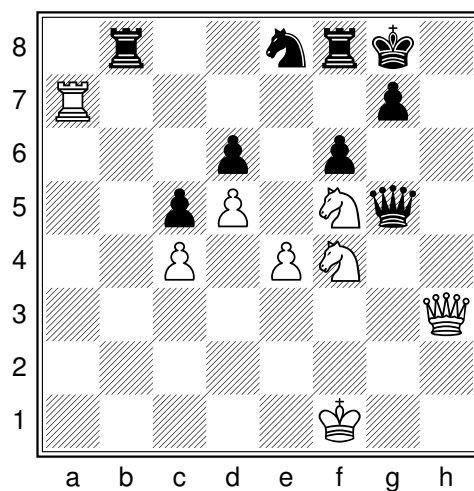
96 exercices pour progresser aux échecs

apprendre-les-echecs.com

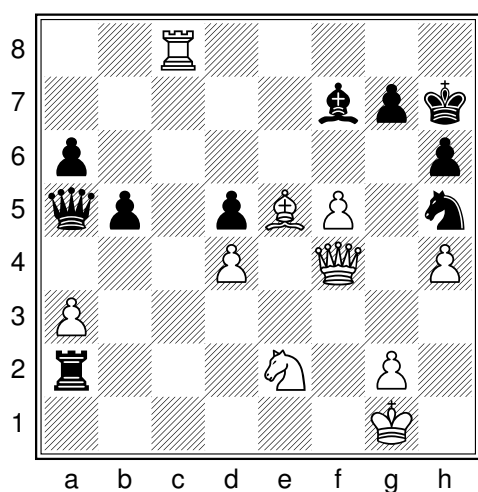




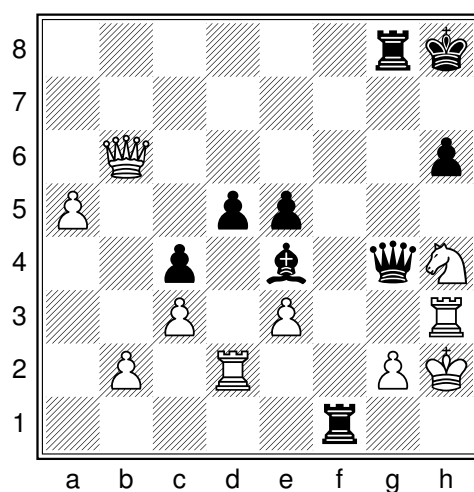
Diag. 1 - Trait aux Noirs



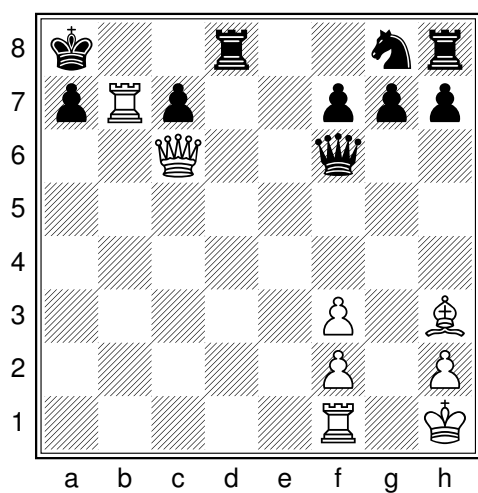
Diag. 2 - Trait aux Blancs



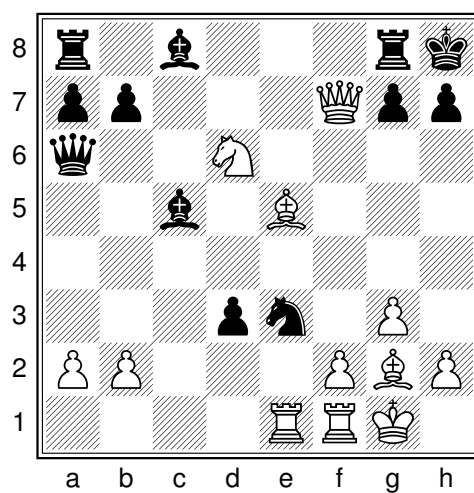
Diag. 3 - Trait aux Blancs



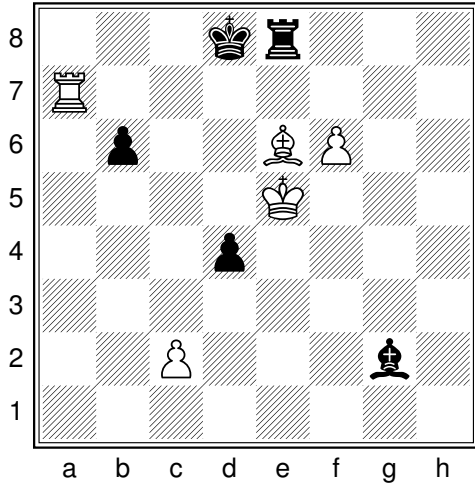
Diag. 4 - Trait aux Noirs



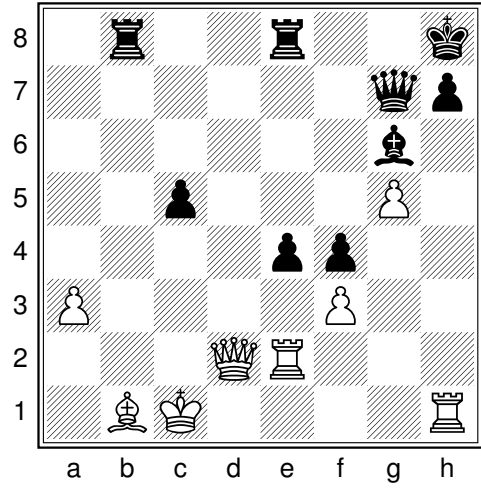
Diag. 5 - Trait aux Blancs



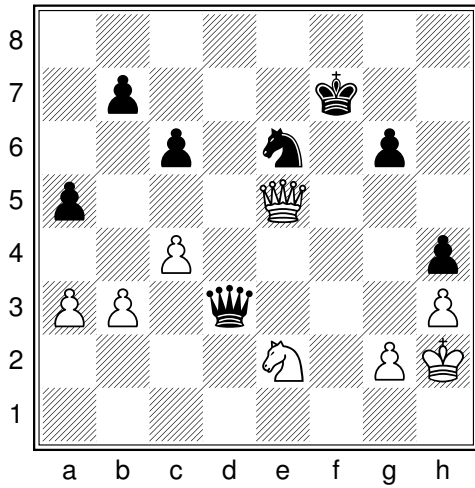
Diag. 6 - Trait aux Blancs



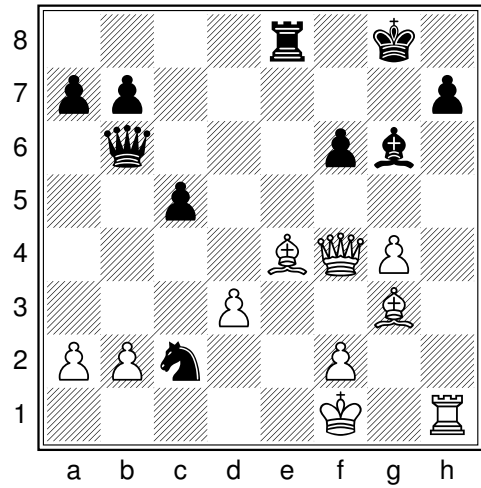
Diag. 7 - Trait aux Blancs



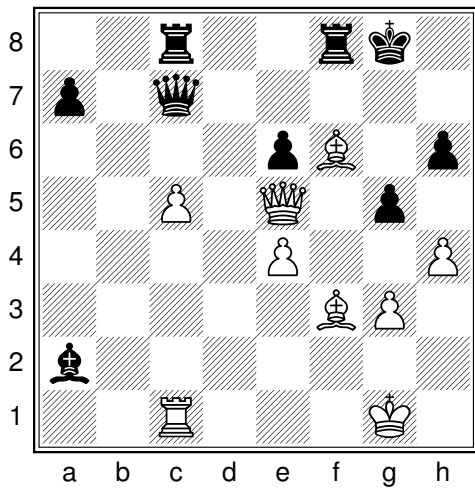
Diag. 8 - Trait aux Noirs



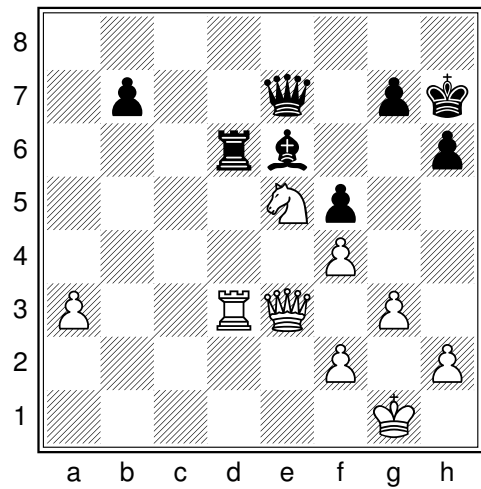
Diag. 9 - Trait aux Blancs



Diag. 10 - Trait aux Blancs



Diag. 11 - Trait aux Noirs



Diag. 12 - Trait aux Blancs

Diagramme 1

33...♖xf2+ 0-1 34.♔xf2 ♖g2#

Ladislav Knazovcik - Pavel Cech, Prague 1992

Diagramme 2

29.♘e7+ ♔f7 30.♞e6#

Viktor Korchnoi - Hans Kuijf, championnat des Pays-Bas par équipes, 1992

Diagramme 3

36.♞xh6+ 1-0 Si 36...♔xh6 ou si 36...g×h6 , 37.♖xh8 mate

Viktor Korchnoi - Arno Nickel, Berlin (simultanée) 2001

Diagramme 4

39...♞xh3+ 0-1 Si 40.♔xh3 ou si 40.g×h3 , 40...♖h1 mate

Dragan Kosic - Srdjan Cvetkovic, Banja Koviljaca 1994

Diagramme 5

20.♖b8+ 1-0 20...♔xb8 21.♖b1 force 21...♞b2 22.♖xb2#

Vladimir Kostic - Johannes Sucher, championnat d'Autriche par équipes 1999

Diagramme 6

23.♙xg7+ ♖xg7 24.♞f8+ ♖g8 25.♘f7#

Markus Lindinger - Axel Neffe, Allemagne 2000

Diagramme 7

56.♖d7+ ♔c8 57.♖g7+ ♔d8 58.♖xg2

Yuliya Levitan - Nana Ioseliani, Olympiades 1992

Diagramme 8

37...♖xb1+ 38.♔xb1 e3+ 39.♞c2 ♙xc2+

Miroslav Pinc - Jaroslav Krouzel, championnat de république tchèque par équipes 1995

Diagramme 9

41.♞xe6+ ♔xe6 42.♘f4+ ♔e5 43.♘xd3+

Gert Ligterink - Rustam Kasimdzhanov, championnat des Pays-Bas par équipes 1998

Diagramme 10

27.♙xg6 h×g6 28.♞c4+ ♔g7 29.♞x2

Darcy Lima - Sergey Makarichev, Seville 1990

Diagramme 11

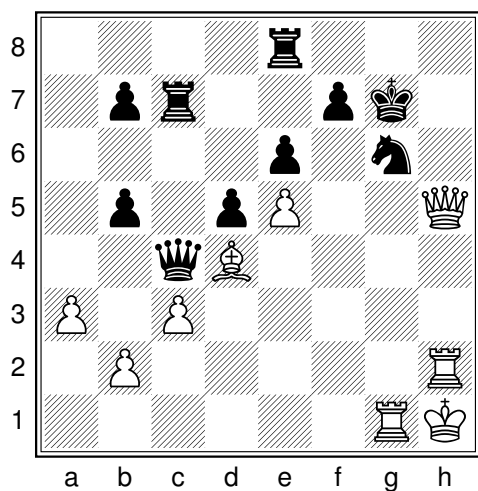
31...♞xe5 32.♙xe5 ♖xf3

Alexandre Nascimento - Edmundo Davila, Olympiades 1992

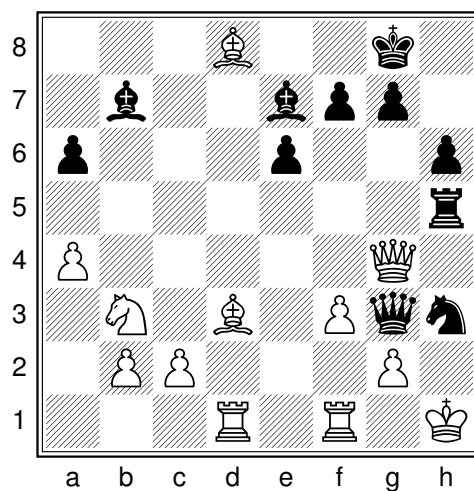
Diagramme 12

41.♞c5 1-0 Ce coup attaque une deuxième fois la Tour, et la défense 41...♖d7 ne marche pas car après 42.♘xd7 la Dame blanche est protégée

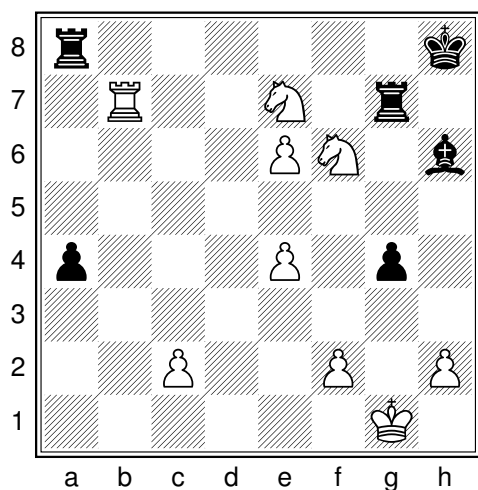
Jozsef Pinter - Rolf Schindwein, championnat d'Allemagne par équipes 1997



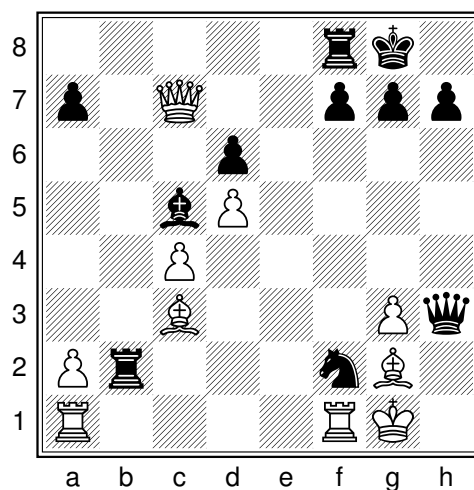
Diag. 13 - Trait aux Blancs



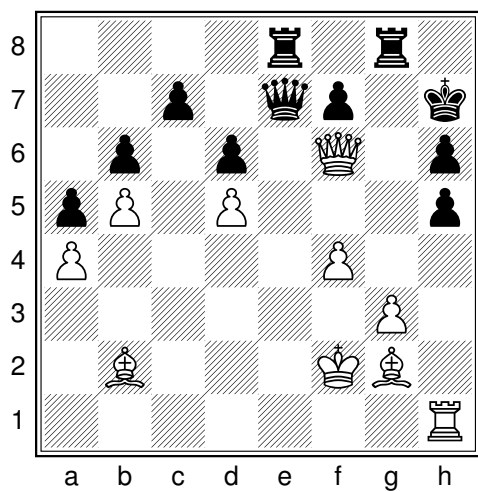
Diag. 14 - Trait aux Noirs



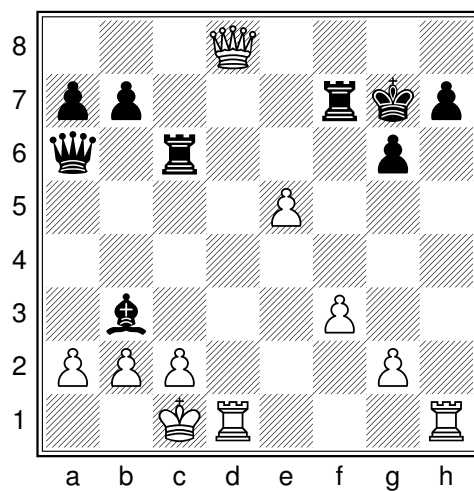
Diag. 15 - Trait aux Blancs



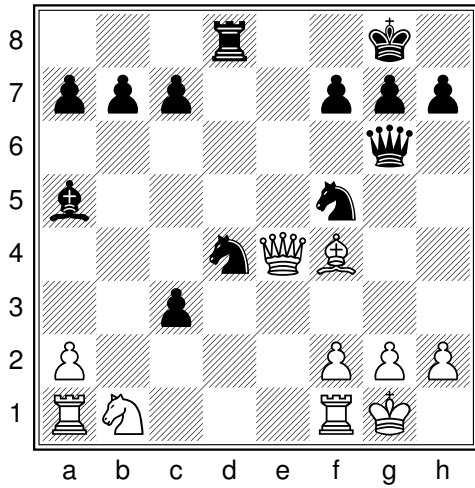
Diag. 16 - Trait aux Noirs



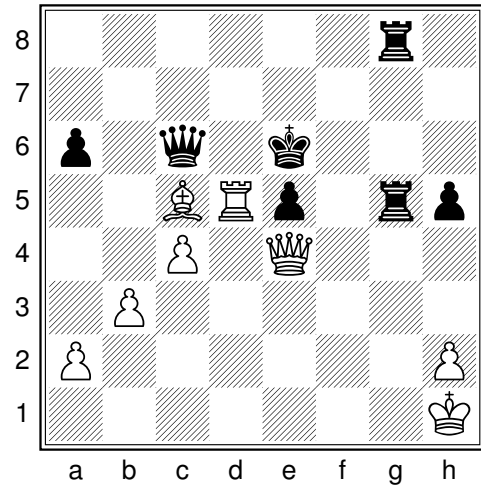
Diag. 17 - Trait aux Blancs



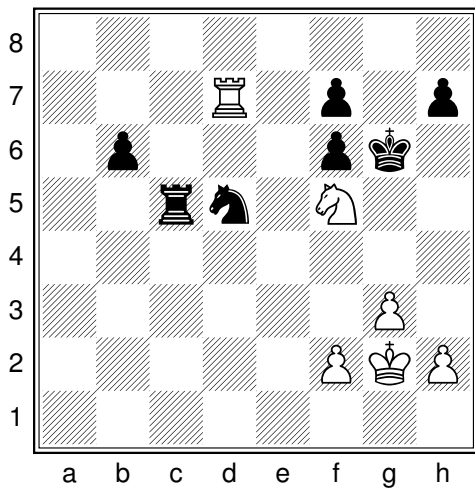
Diag. 18 - Trait aux Blancs



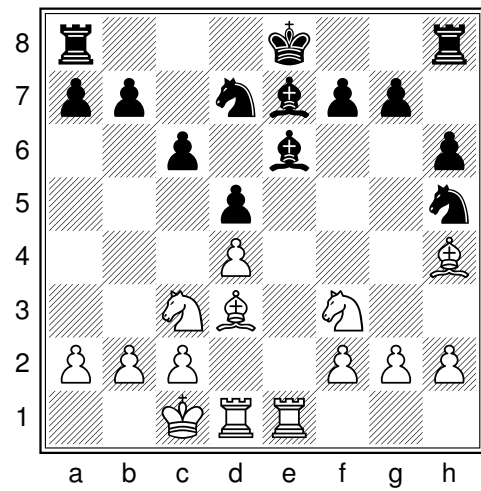
Diag. 19 - Trait aux Noirs



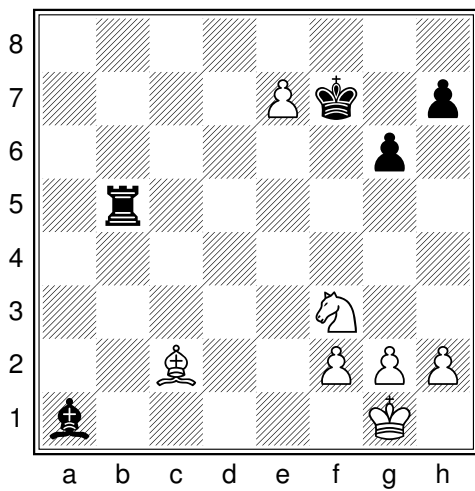
Diag. 20 - Trait aux Blancs



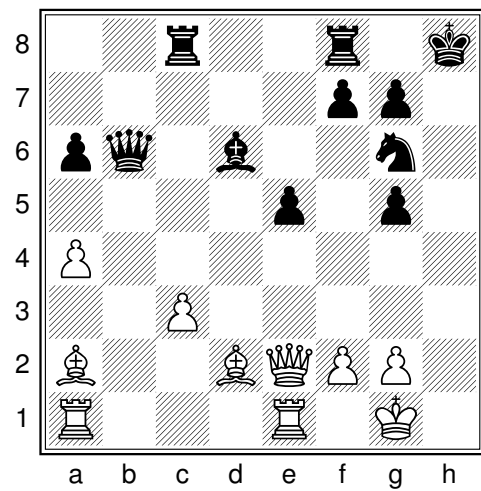
Diag. 21 - Trait aux Blancs



Diag. 22 - Trait aux Blancs



Diag. 23 - Trait aux Blancs



Diag. 24 - Trait aux Blancs

Diagramme 13**36.♖h6+ ♔g8 37.♖h8#**

Martin Kreuzer - Vlastimil Vodicka, Allemagne 1997

Diagramme 14**28...♗f2+ 29.♖g1 ♜h1#**

Jorgen Juul Kristensen - Bent Larsen, Aars 1995

Diagramme 15**34.♗g6+ ♜xg6 (seul coup) 35.♜h7#**

Guenter Kuban - Cornelius Gaehler, Allemagne 1999

Diagramme 16**20...♖h1+ 21.♙xh1 ♗h3#**

Emanuel Lasker - Ignatz von Popiel, Berlin 1889

Diagramme 17**28.♙e4+ ♖xe4 (28...♜g6 29.♖g7#) 29.♖xf7+ ♜g7 30.♖xg7#**

Yuri Malinin - Alexey Afonin, St Petersburg 1998

Diagramme 18**25.♜xh7+ 1-0 25...♖xh7 26.♜h1+ ♔g7 27.♖h8#**

A. Martinez - T. Spaan, 1987

Diagramme 19**19...♗g3 0-1** La Dame blanche est en prise, et les Blancs n'ont pas le temps de jouer
20.♖xg6 à cause de **20...♗de2#**

Napoleon Marache - Paul Morphy, Nouvelle Orleans 1857

Diagramme 20**40.♜xe5+ ♜xe5 (40...♔d7 41.♜e7+ ♔d8 42.♖xc6) 41.♖xc6+**

Cedomir Micic - Slobodan Martinovic, Belgrade 1988

Diagramme 21**55.♜xd5 ♜xd5 56.♗e7+ ♔g5 57.♗xd5**

Alexander Noble - Michael Hoelzlein, Bayern 1998

Diagramme 22**15.♜xe6 fxe6 16.♙g6+ ♔d8 17.♙xh5**

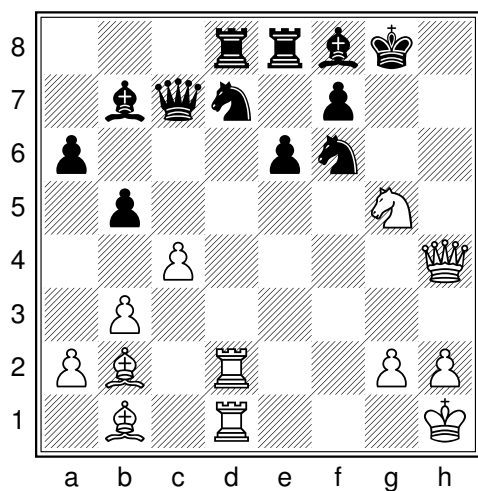
Vadim Novichkov - Ilya Frog, Moscou 1996

Diagramme 23**36.e8♖+ 1-0** Après **36...♖xe8 37.♙a4** gagne la Tour noire

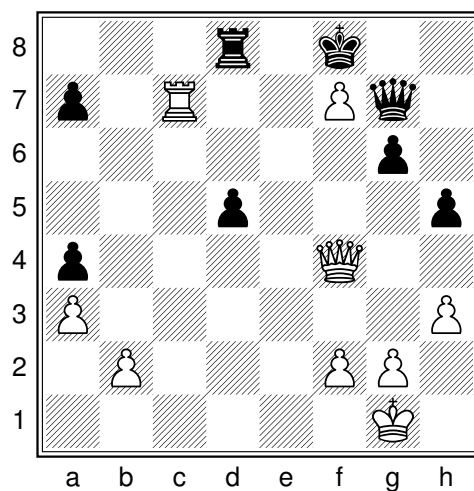
Viacheslav Ragozin - Isaak Boleslavsky, championnat d'URSS 1945

Diagramme 24**32.♖h5+ ♔g8 33.♖xg6 1-0**

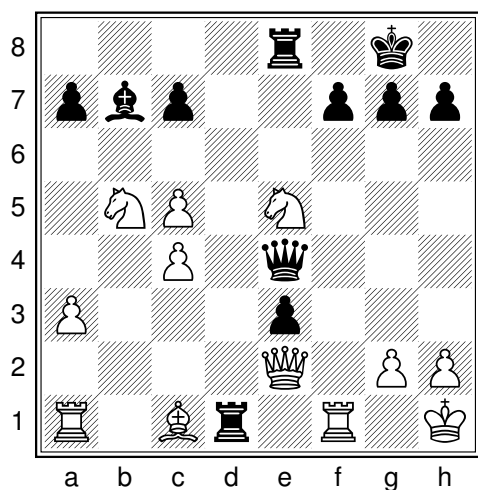
Daniel Rivera Kuzawka - Antoine Elelers, Argentine 1991



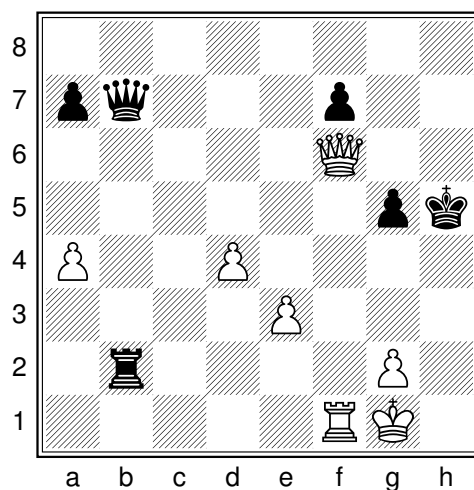
Diag. 25 - Trait aux Blancs



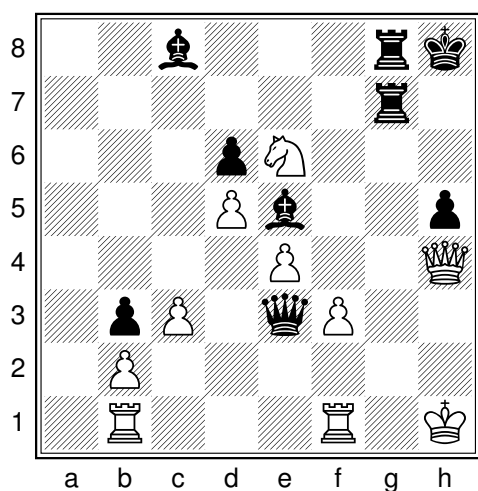
Diag. 26 - Trait aux Blancs



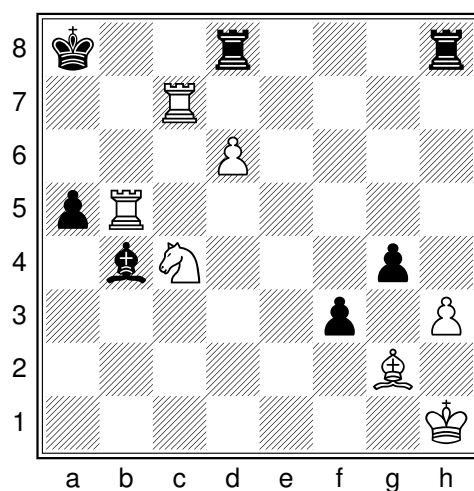
Diag. 27 - Trait aux Noirs



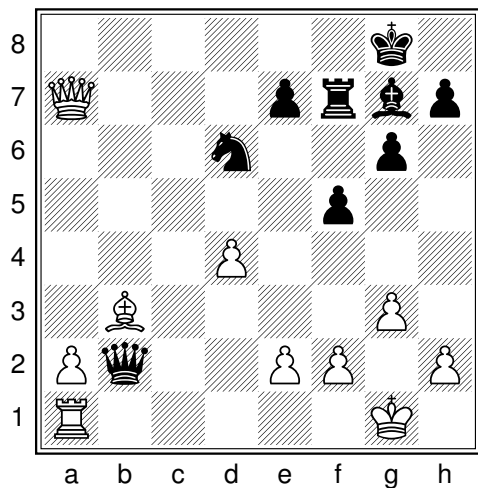
Diag. 28 - Trait aux Blancs



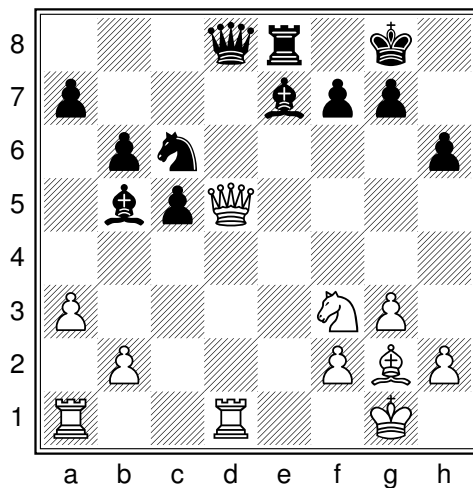
Diag. 29 - Trait aux Noirs



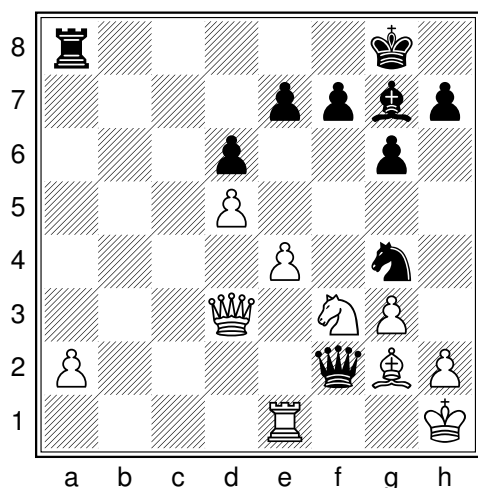
Diag. 30 - Trait aux Blancs



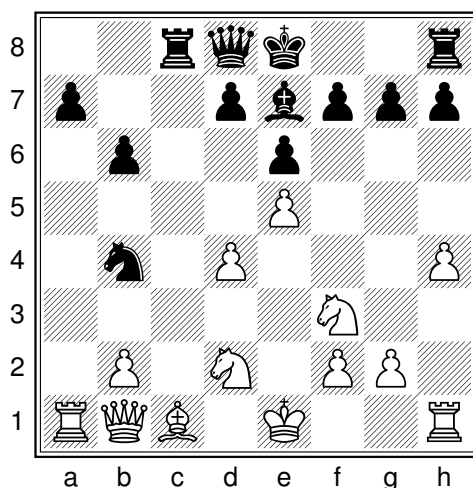
Diag. 31 - Trait aux Blancs



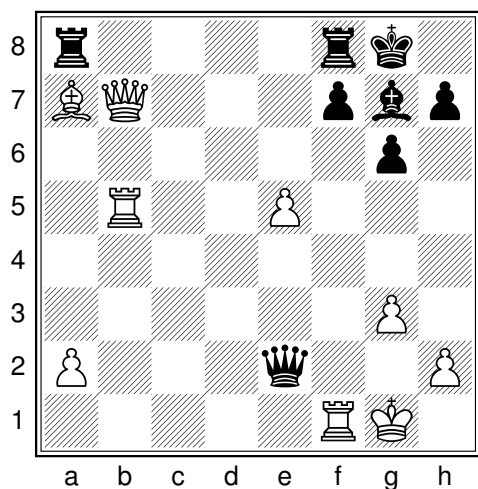
Diag. 32 - Trait aux Blancs



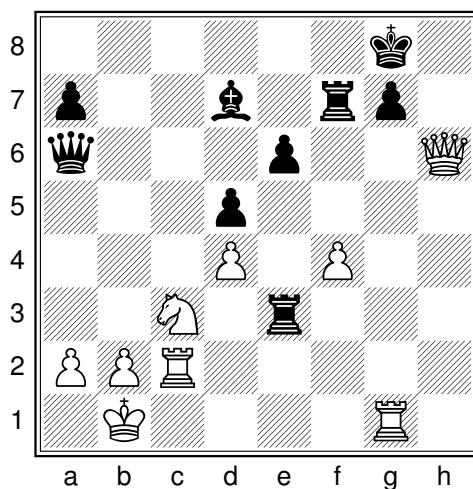
Diag. 33 - Trait aux Noirs



Diag. 34 - Trait aux Noirs



Diag. 35 - Trait aux Noirs



Diag. 36 - Trait aux Noirs

Diagramme 25

28. ♖×h7+ 1-0 28... ♗×h7 29. ♘×h7#

Bela Lengyel - Sandor Orgovan, Budapest 1989

Diagramme 26

39. ♖b4+ 1-0 39... ♖d6 40. ♖×d6#

Vladimir Malaniuk - Petr Sinkevich, Moscou 1996

Diagramme 27

21... ♖×g2+ 22. ♖×g2 ♖×f1#

Carl Mayet - Adolf Anderssen, Berlin 1862

Diagramme 28

40. ♖h8+ 1-0 Si 40... ♔g6 41. ♖f6# et si 40... ♔g4 41. ♖h3#

Eduard Meduna - Viktor Volodin, Decin 1996

Diagramme 29

42... ♖g1+ 43. ♖×g1 ♖×f3+ 0-1 44. ♖g2 ♖×g2#

Andrey Masalov - Michail Ivanov, Moscou 1996

Diagramme 30

40. ♗b6+ ♔b8 41. ♗c8+ ♔a8 42. ♖a7#

Adrian Mikhalchishin - William Whittow, Ischia 1994

Diagramme 31

22. ♖b8+ ♘f8 23. ♘×f7+ ♔×f7 24. ♖bb2

Adrian Mikhalchishin - Uros Kavcic, championnat de SlovĀnie par Ālquipes, 1997

Diagramme 32

24. ♖b3 1-0 24... ♖c8 25. ♖×b5

Fikret Sideif Sade - Arkadi Eremeevich Vul, Union SoviĀtique 1981

Diagramme 33

28... ♖×e1+ 29. ♗×e1 ♗f2+ 30. ♔g1 ♗×d3

Zsolt Papp - SebestyĀn Antal, championnat de Hongrie par Ālquipes 1998

Diagramme 34

13... ♖×c1+ 14. ♖×c1 ♗d3+ 15. ♔e2 ♗×c1+

Thomas Pedersen - Zbigniew Jasnikowski, Vanlose 1991

Diagramme 35

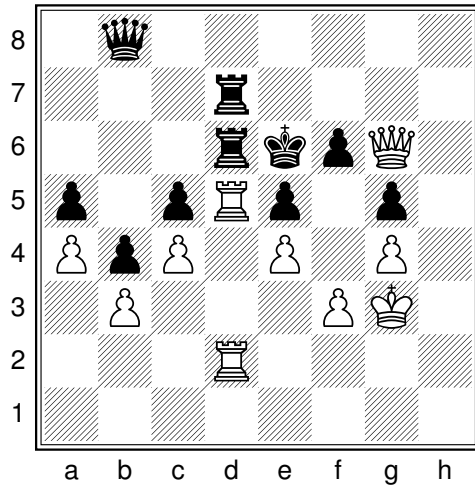
23... ♖×a7 24. ♖×a7 ♖×b5

Robin Lorenz - H. Schmid, Allemagne 1989

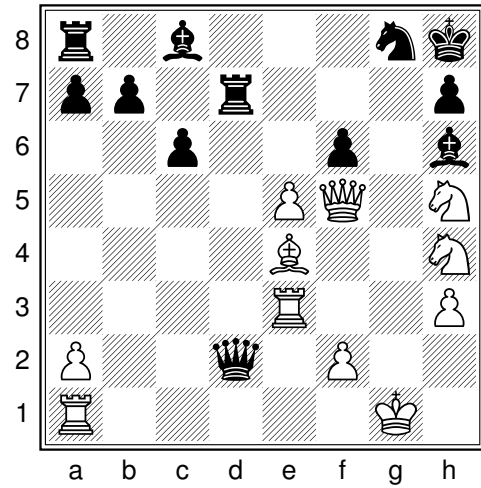
Diagramme 36

31... ♖e1+ 32. ♖×e1 (32. ♖c1 ♖d3+ 33. ♔a1 ♖×c1+ 34. ♖×c1 g×h6) 32... g×h6

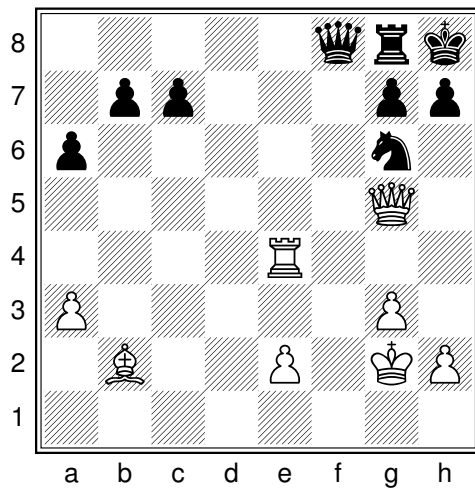
Ian MacKay - Roderick McKay, championnat d'Ecosse 1993



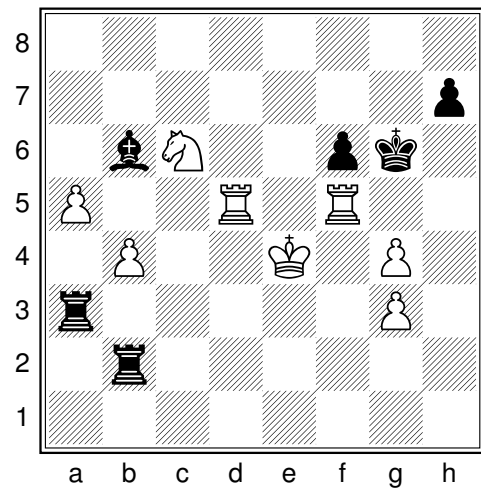
Diag. 37 - Trait aux Blancs



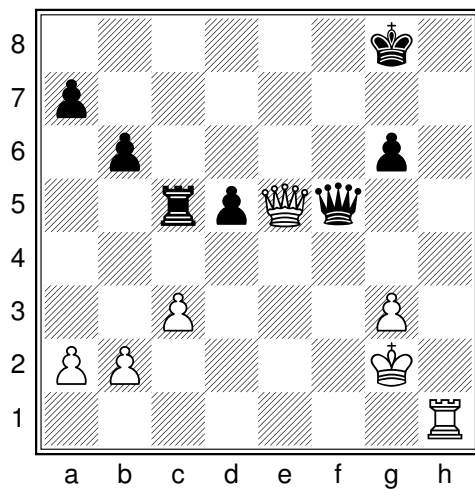
Diag. 38 - Trait aux Blancs



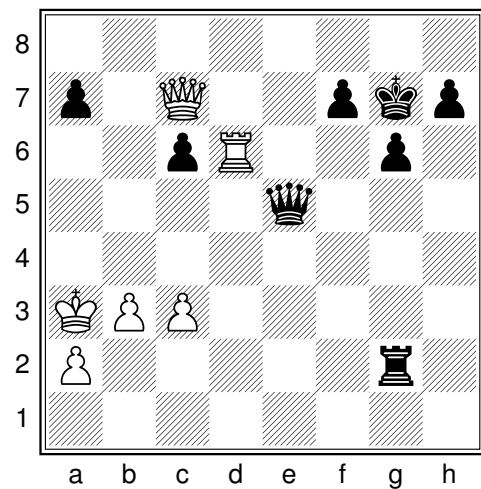
Diag. 39 - Trait aux Blancs



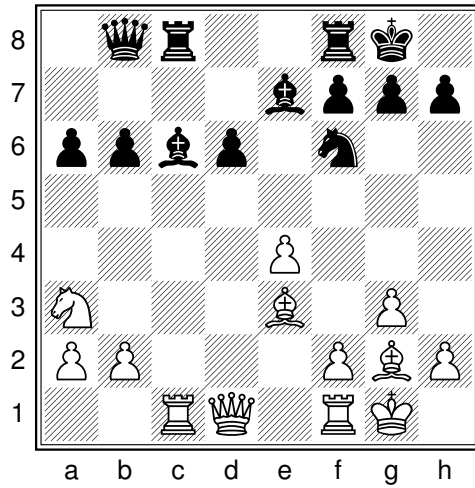
Diag. 40 - Trait aux Noirs



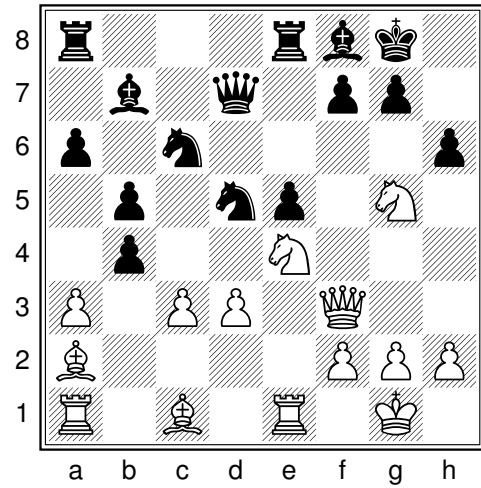
Diag. 41 - Trait aux Blancs



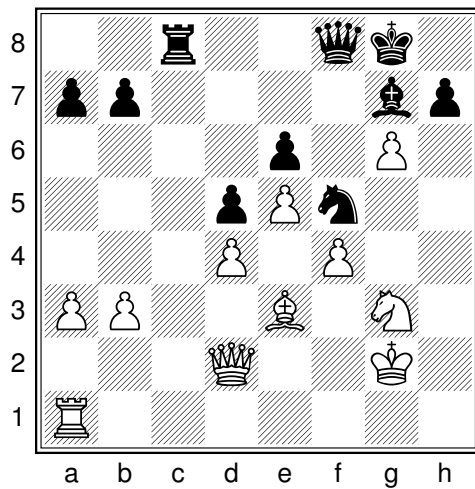
Diag. 42 - Trait aux Noirs



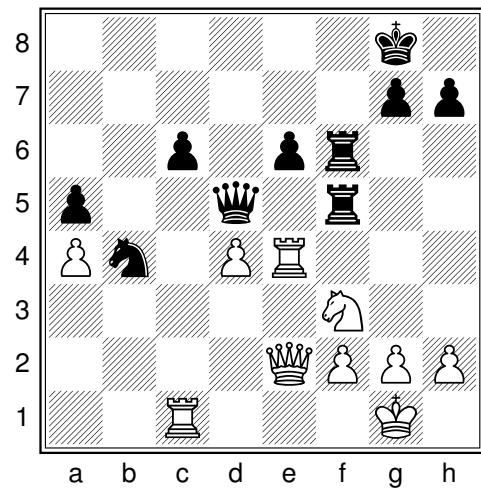
Diag. 43 - Trait aux Blancs



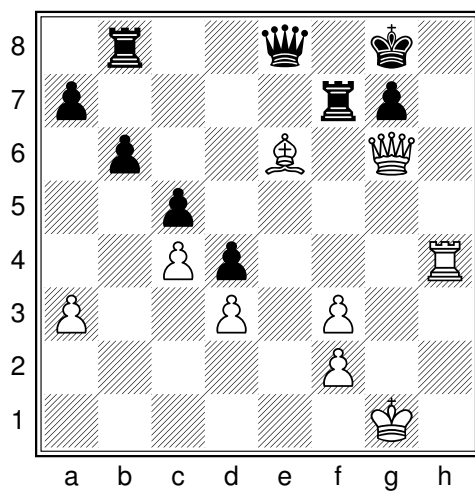
Diag. 44 - Trait aux Blancs



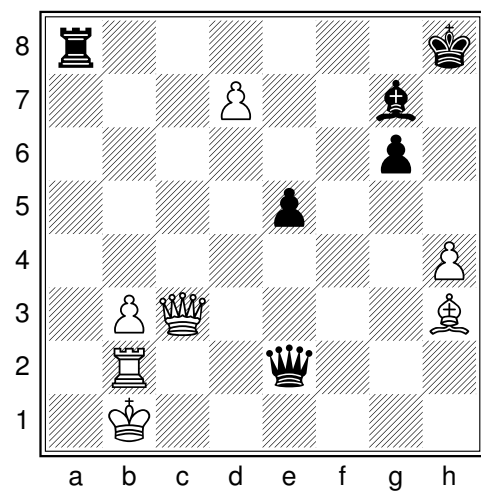
Diag. 45 - Trait aux Noirs



Diag. 46 - Trait aux Noirs



Diag. 47 - Trait aux Blancs



Diag. 48 - Trait aux Noirs

Diagramme 37

61.♖×e5+ 1-0 61...♔×e5 62.♗f5#
A. Mestel - O. Jakobsen, Esbjerg 1984

Diagramme 38

32.♗×h7+ 1-0 32...♖×h7 33.♘g6#
Veselin Mihajlovic - Branko Tadic, Budva 2002

Diagramme 39

31.♗×g6 1-0 31...h×g6 32.♖h4#
Anthony Miles - Jan Timman, Tilburg 1984

Diagramme 40

48...♖e3+ 49.♔f4 0-1 Il suit 49...♖f2#
Karl Johan Moberg - Krister Olsson, Gothenburg 1994

Diagramme 41

37.♖h8+ ♔f7 38.♖h7+ 1-0 Si 38...♔f8 ou 38...♔g8 il suit 39.♗h8#
Stefan Mohr - Guyla Horvath, Budapest 1988

Diagramme 42

36...♗c5+ 0-1 37.b4 (37.♔a4 ♖×a2#) ♗×c3+ 38.♔a4 ♖×a2#
Sasho Nikolov - Kiril Georgiev, championnat de Bulgarie 1982

Diagramme 43

17.♖×c6 ♖×c6 18.e5 ♖cc8 19.exf6
Yaacov Stisis - Etienne Bauduin, Israel 1988

Diagramme 44

19.♕×d5 ♗×d5 20.♘f6+ g×f6 21.♗×d5
Raj Tischbierek - Hannu Wegner, championnat d'Allemagne par Ãlquipes 1990

Diagramme 45

31...♖c2 0-1 32.♗×c2 ♘×e3+
Lutz Pinkus - Viktor Komliakov, Berlin 1994

Diagramme 46

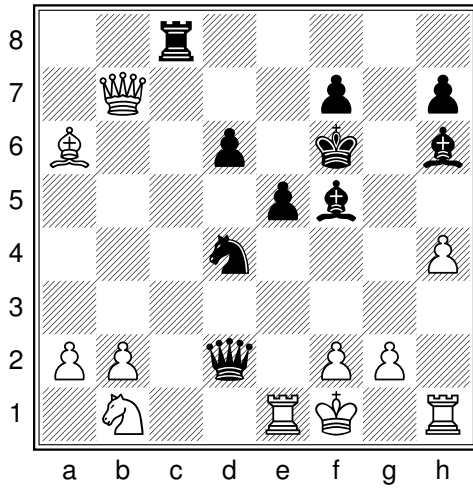
31...♖×f3 32.g×f3 ♗g5+ 33.♖g4 ♗×c1+
Ruslan Pogorelov - Pal Petran, Budapest 1992

Diagramme 47

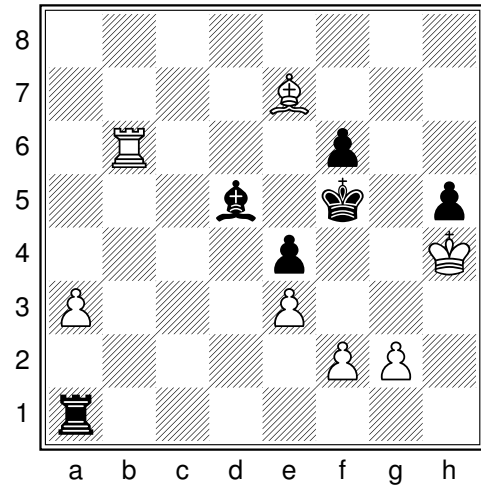
37.♕×f7 ♗×f7 38.♖h8+ ♔×h8 39.♗×f7
Vadim Malakhatko - Natalia Edzgveradze, Alushta 1999

Diagramme 48

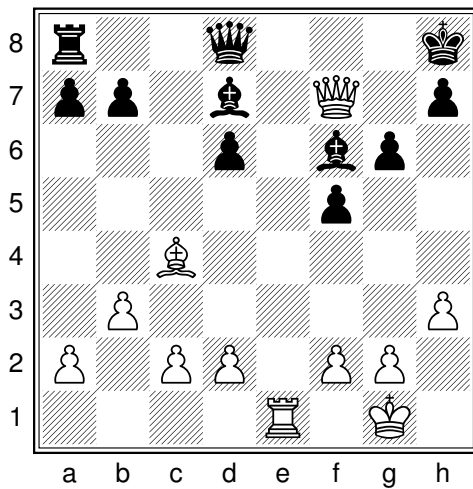
49...♗d1+ 50.♗c1 ♖a1+ 51.♔×a1 ♗×c1+
Anthony Miles - Eugenio Torre, Bugojno 1984



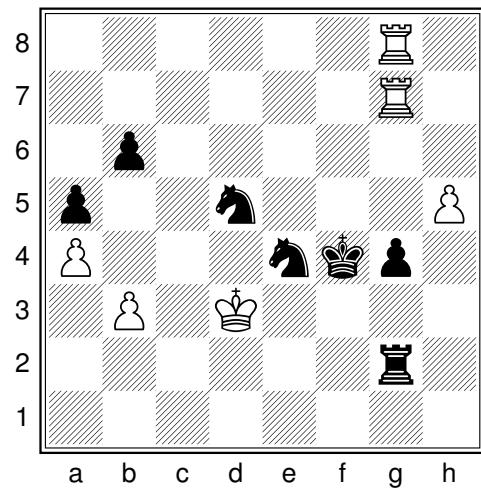
Diag. 49 - Trait aux Noirs



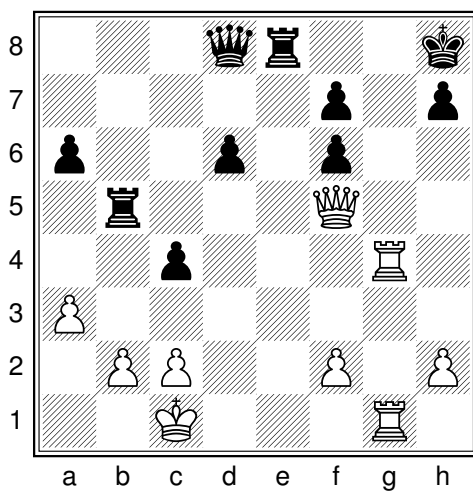
Diag. 50 - Trait aux Noirs



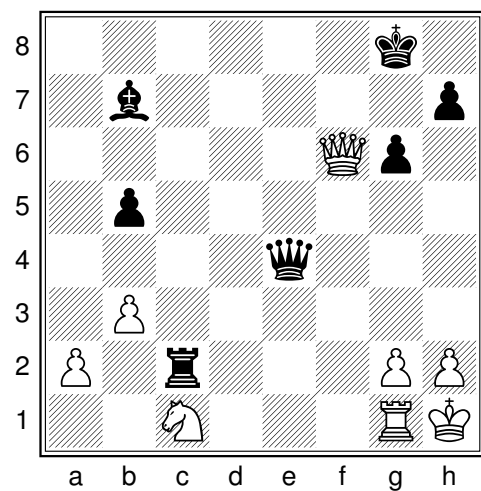
Diag. 51 - Trait aux Blancs



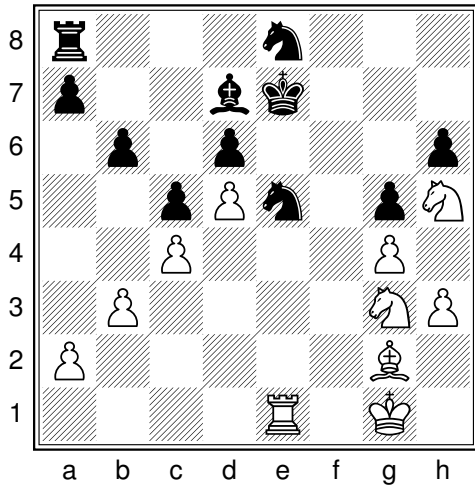
Diag. 52 - Trait aux Noirs



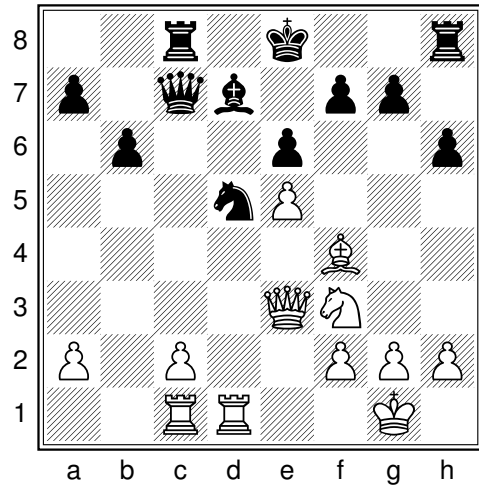
Diag. 53 - Trait aux Blancs



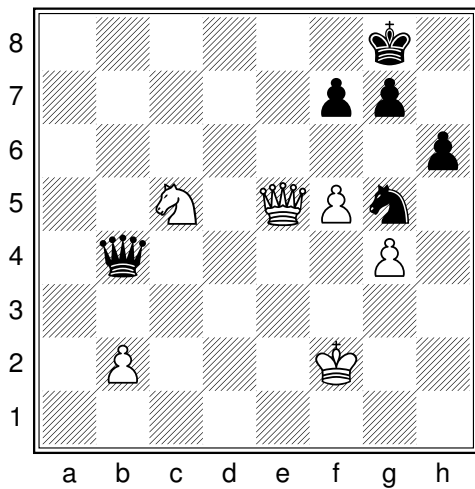
Diag. 54 - Trait aux Noirs



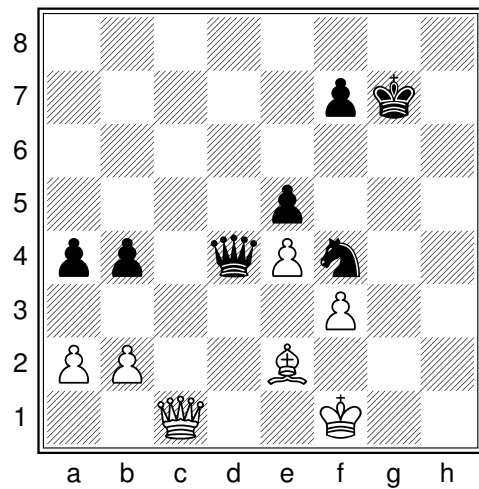
Diag. 55 - Trait aux Blancs



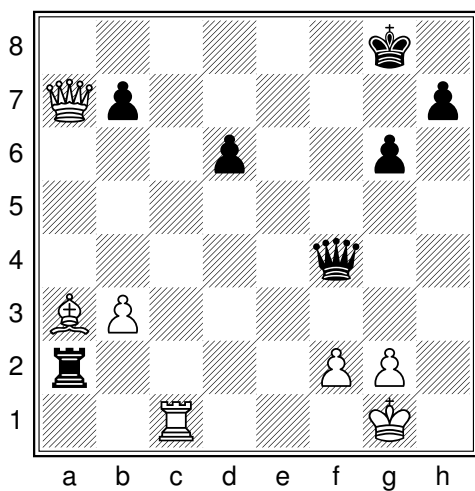
Diag. 56 - Trait aux Blancs



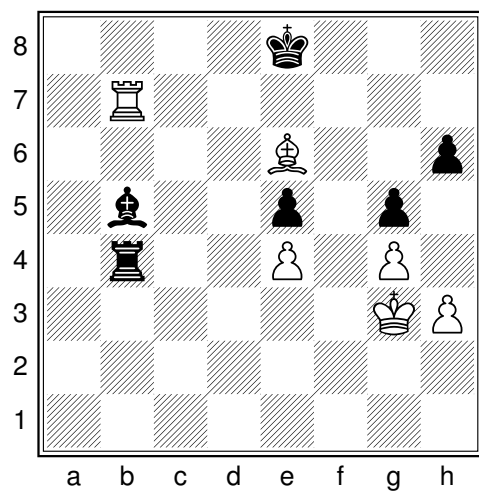
Diag. 57 - Trait aux Noirs



Diag. 58 - Trait aux Noirs



Diag. 59 - Trait aux Noirs



Diag. 60 - Trait aux Blancs

Diagramme 49

23...♔×e1+ 0-1 AprÃs 24.♕×e1 il suit 24...♖c1#
Karel Mokry - Alois Lanc, Budapest 1981

Diagramme 50

38...♖h1+ 39.♕g3 h4#
Viktor Moskalenko - Georgi Orlov, Leningrad 1989

Diagramme 51

25.♖e8+ 1-0 si 25...♙×e8 26.♗g8# et si 25...♗×e8 26.♗×f6#
Rashid Nezhmetdinov - Yuri Kotov, Krasnodar 1957

Diagramme 52

52...♖d2+ 53.♕c4 ♘d6#
Lothar Nikolaiczuk - Peter Hertzog, Krefeld 1986

Diagramme 53

27.♗×h7+ 1-0 27...♕×h7 28.♖h4+ ♖h5 29.♖×h5#
John Nunn - Craig Pritchett, championnat d'Allemagne par Ãquipes 1985

Diagramme 54

33...♗×g2+ 0-1 34.♖×g2 ♖×c1+ 35.♗f1 ♖×f1#
Yannick Pelletier - Joseph Gallagher, Biel 1992

Diagramme 55

27.♖×e5+ d×e5 28.d6+ ♘×d6 29.♙×a8 gagne une piÃce contre un pion
Boris Vladimirov - Jacob Yukhtman, Sverdlovsk 1957

Diagramme 56

20.♖×d5 e×d5 21.e6 ♗c3 22.e×d7+ gagne deux piÃces contre une Tour et un pion, et met le Roi noir dans une situation dangereuse
Jochen Wege - Matthias Berndt, Allemagne 1999

Diagramme 57

37...♗×c5+ 38.♗×c5 ♘e4+
Josef Roth - Marc Steinert, championnat d'Allemagne par Ãquipes 1993

Diagramme 58

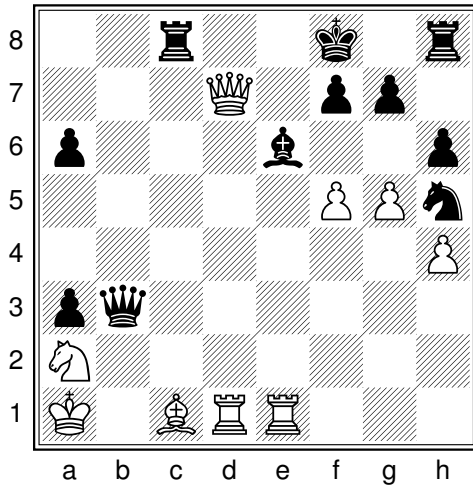
37...♗g1+ 38.♕×g1 ♘×e2+ 39.♕f2 ♘×c1
Alexander Tolush - Vladimir Simagin, Moscou 1952

Diagramme 59

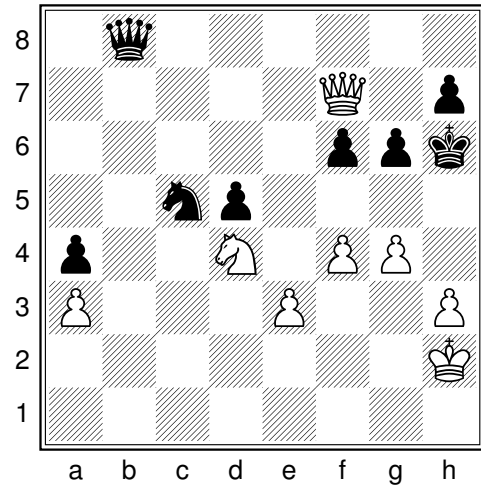
33...♗×c1+ 34.♙×c1 ♖×a7 Alexander Tsynman - Verena Nagel, Berlin 1997

Diagramme 60

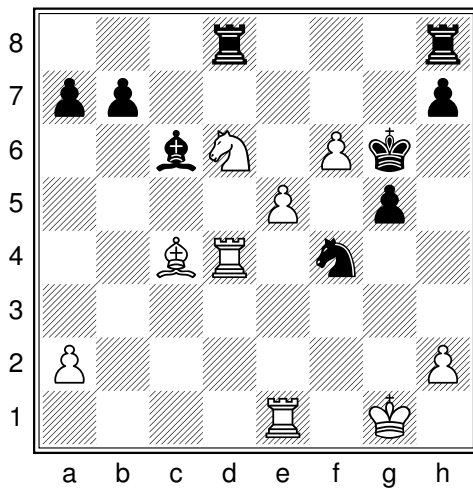
39.♙d7+ ♕d8 40.♖×b5
Tamas Utasi - Bela Balogh, Kecskemet 1983



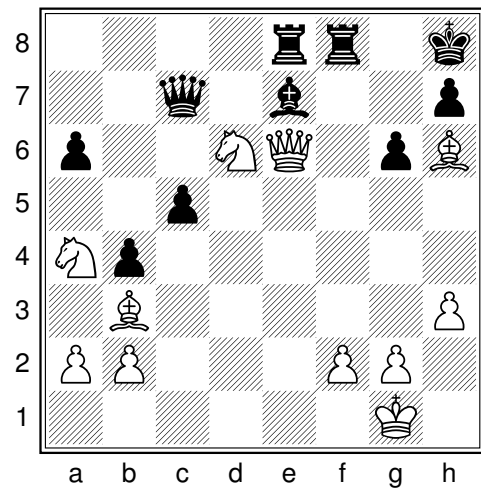
Diag. 61 - Trait aux Blancs



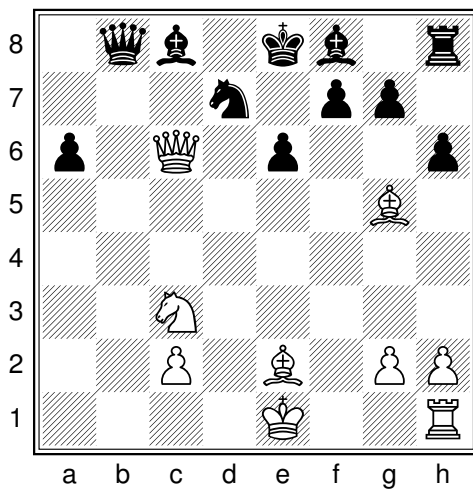
Diag. 62 - Trait aux Blancs



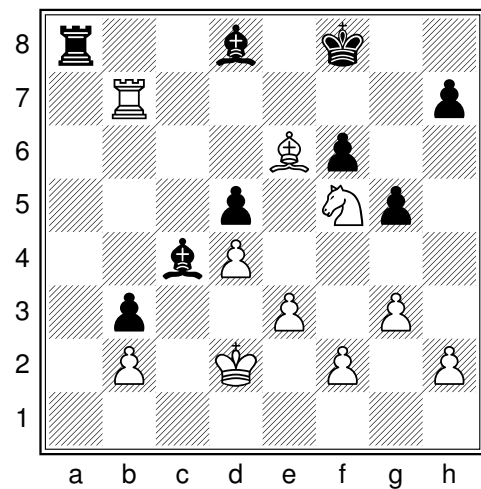
Diag. 63 - Trait aux Blancs



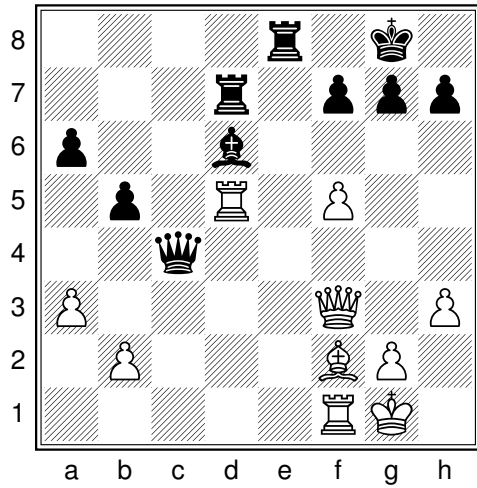
Diag. 64 - Trait aux Blancs



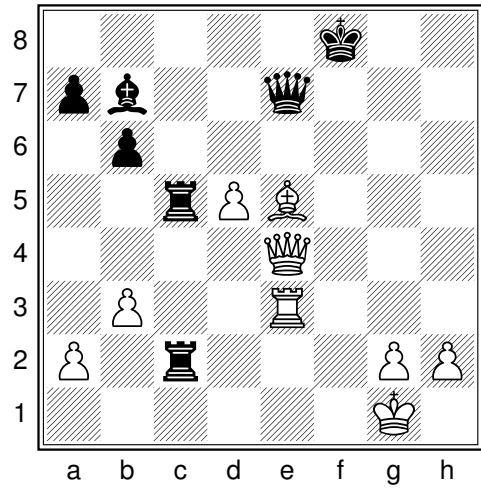
Diag. 65 - Trait aux Blancs



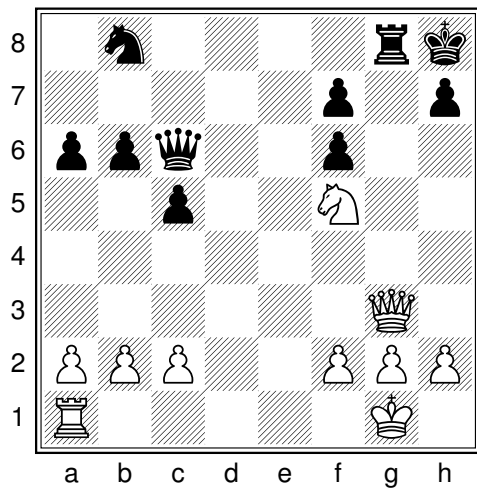
Diag. 66 - Trait aux Blancs



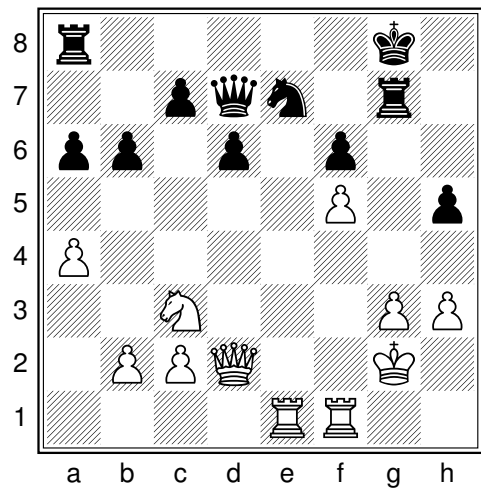
Diag. 67 - Trait aux Noirs



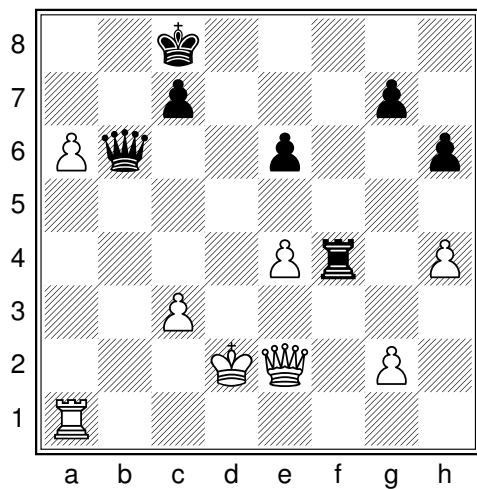
Diag. 68 - Trait aux Blancs



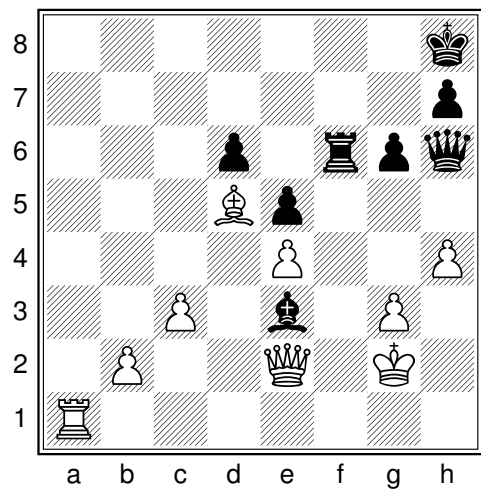
Diag. 69 - Trait aux Blancs



Diag. 70 - Trait aux Blancs



Diag. 71 - Trait aux Noirs



Diag. 72 - Trait aux Blancs

Diagramme 61

31.♖×c8+ 1-0 Si 31...♙×c8 32.♚d8# et si 31...♙e7 32.♚d7#

Oleg Nikolenko - Milan Walek, Pardubice 1995

Diagramme 62

44.♗f5+ 1-0 44.g×f5 ♖×f6#

Andrei Obodchuk - Alexander Kopylov, Khanty-Mansiysk 2009

Diagramme 63

32.♙f7+ ♔h6 33.♗f5#

Axel Ornstein - JOnny Hector, championnat de SuÃde 1985

Diagramme 64

33.♖g8+ ♚×g8 34.♗f7#

Jack Peters - William Lombardy, Lone Pine 1977

Diagramme 65

20.♖×e6+ 1-0 20...f×e6 21.♙h5+ g6 22.♙×g6#

Luis Sousa Reis - Ruben Miguel Nunes Pereira, Lisbon 2006

Diagramme 66

33.♚f7+ ♔g8 (33...♙e8 34.♗g7#) 34.♚g7+ 1-0 34...♙f8 (ou 34...♙h8)

35.♚g8#

Alexander Rustemov - Pavel Smirnov, coupe de Russie 2004

Diagramme 67

26...♖×d5 27.♖×d5 ♙h2+ 28.♙×h2 ♚×d5

Arno Zude - Joachim Wallner, Vienne 1998

Diagramme 68

32.♙g7+ attaque la Dame noire Ã la dÃcouverte. Si 32...♖×g7 33.♖e8#

Johannes Zukertort - Joseph Blackburne, Londres 1883

Diagramme 69

23.♖×g8+ ♙×g8 24.♗e7+ ♙f8 25.♗×c6 ♗×c6 gagne une qualitÃ

Franco Trabattoni - Enrico Pozzi, Lombardie 1991

Diagramme 70

22.♚×e7 ♚×e7 23.♖d5+ ♙g7 24.♖×a8

Claus Werner - Juergen Zollstab, BaviÃre 1998

Diagramme 71

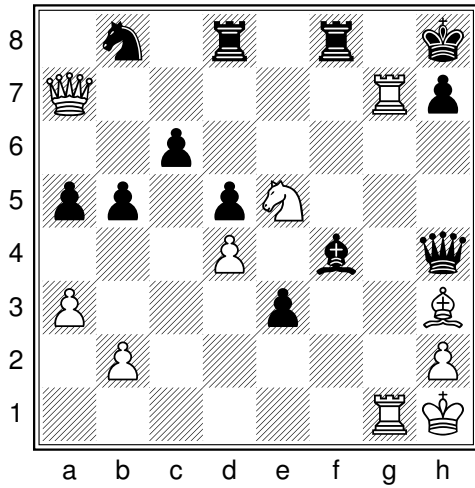
27...♖b2+ 28.♙e3 ♚×e4+ 29.♙×e4 ♖×e2+

Ewa Nagrocka - Grazyna Bakalarz, Allemagne 1991

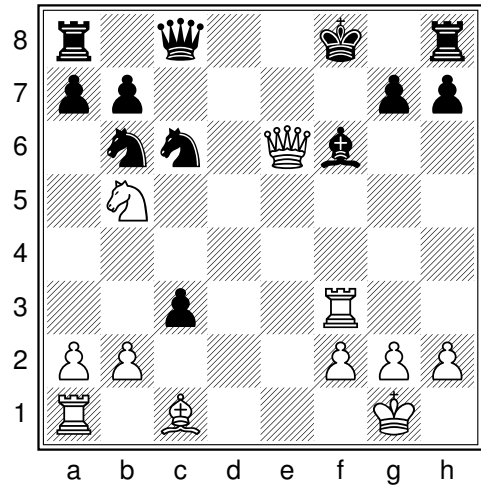
Diagramme 72

44.♚a8+ ♚f8 (dans la partie il suivit 44...♙g7 45.♚g8#) 45.♚×f8 ♖×f8 46.♖×e3

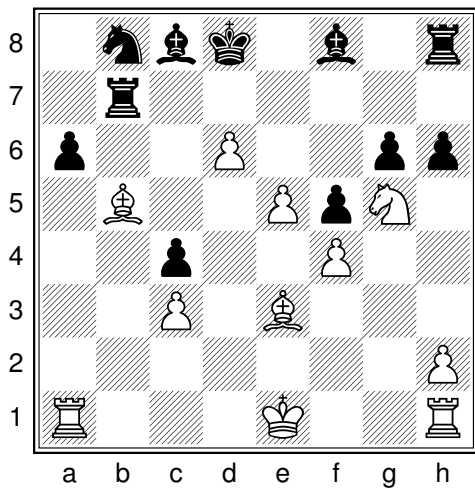
Jean Christophe Olivier - Blaise Javet, GenÃve 2001



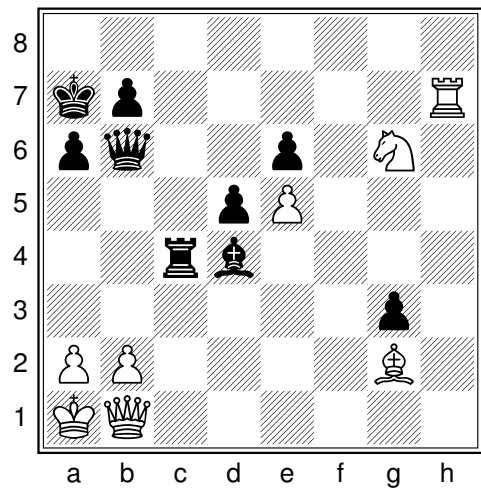
Diag. 73 - Trait aux Blancs



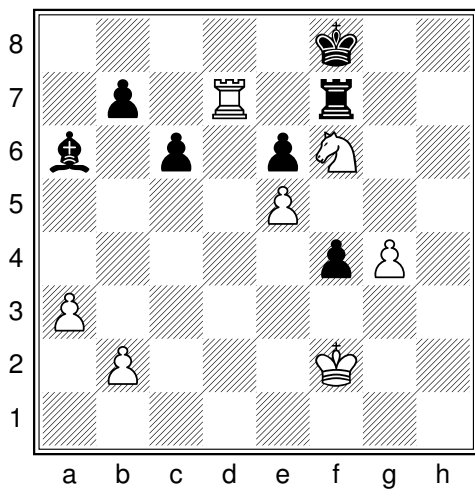
Diag. 74 - Trait aux Blancs



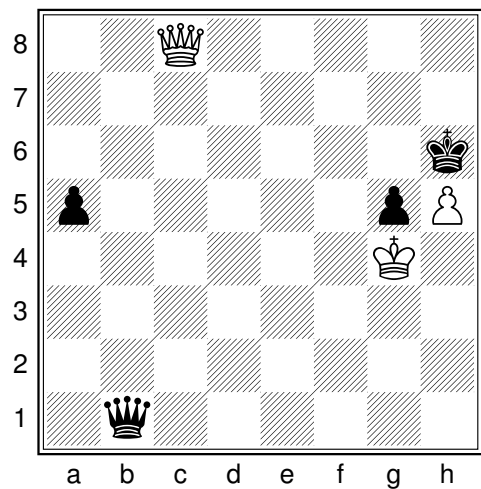
Diag. 75 - Trait aux Blancs



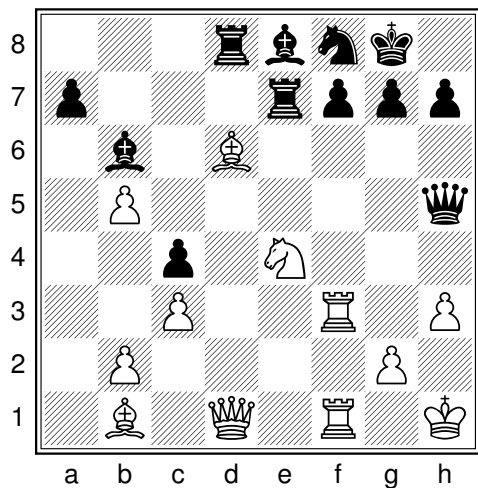
Diag. 76 - Trait aux Noirs



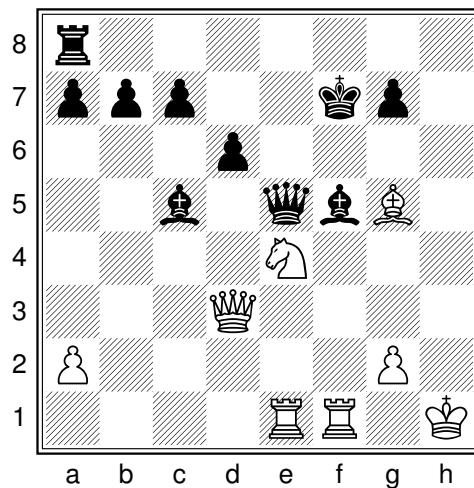
Diag. 77 - Trait aux Blancs



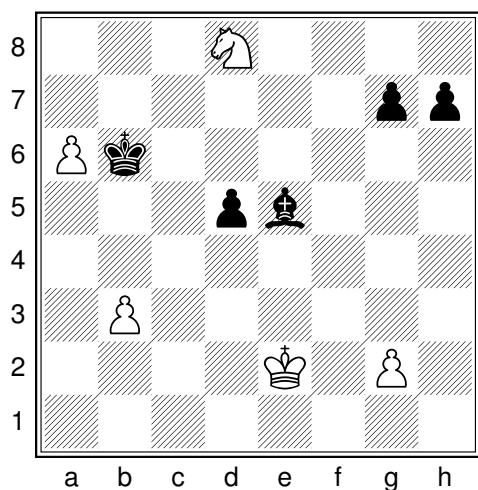
Diag. 78 - Trait aux Blancs



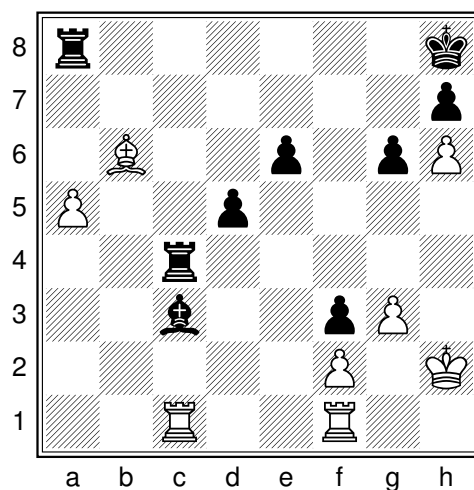
Diag. 79 - Trait aux Blancs



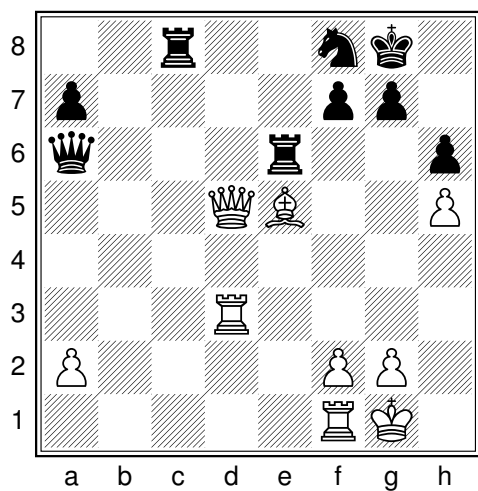
Diag. 80 - Trait aux Blancs



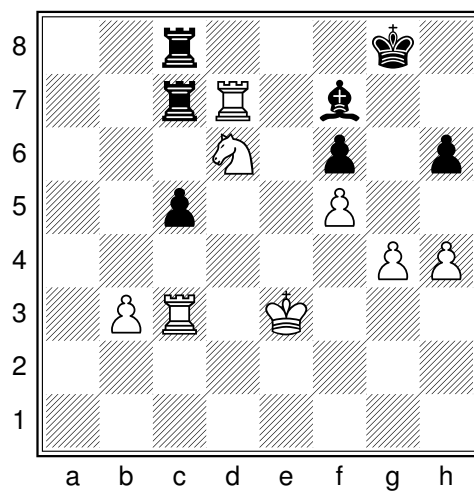
Diag. 81 - Trait aux Blancs



Diag. 82 - Trait aux Blancs



Diag. 83 - Trait aux Noirs



Diag. 84 - Trait aux Blancs

Diagramme 73

40. ♖g8+ 1-0 40... ♗xg8 41. ♘f7#

Philipp Schlosser - Ian Thompson, Groningen 1996

Diagramme 74

19. ♗xf6+ gxf6 20. ♙h6#

Eric Rodriguez - Charles Riordan, 2011

Diagramme 75

23. ♙b6+ 1-0 23... ♗xb6 24. ♘f7#

Ian Rogers - Zlatko Klaric, Nuoro 1984

Diagramme 76

Les Noirs ont raté le mat suivant : 36... ♗xb2+ 37. ♗xb2 ♖c1#

Vladimir Savon - Bukhuti Gurgenidze, Union Soviétique 1971

Diagramme 77

35. ♖d8+ 1-0 35... ♙g7 (35... ♙e7 36. ♗e8#) 36. ♗g8+ ♙h6 37. g5#

Frank Sawatzki - Gisbert Schlichtmann, Oldenburg 2000

Diagramme 78

57. ♗h8+ 1-0 57... ♗h7 58. ♗f6+ ♗g6 59. ♗xg6#

Julian Scheider - Arif Peter REssman, Dortmund 2003

Diagramme 79

31. ♘f6+ gxf6 32. ♖g3+ attaque et gagne la Dame noire

Volker Schlick - Stefan Buecker, championnat d'Allemagne par équipes 1993

Diagramme 80

22. ♗xf5+ ♗xf5 23. ♘xd6+ ♙xd6 24. ♗xf5+

Daan Brandenburg - Lea Bismuth, Aix-les-Bains 2011

Diagramme 81

48. a7 ♙xa7 49. ♘c6+ ♙b6 50. ♘xe5

Heikki Westerinen - Rene Borngaesser, Solingen 1986

Diagramme 82

42. ♗xc3 ♗xc3 43. ♙d4+ ♙g8 44. ♙xc3

Anastasiya Zhevakina - Ekaterina Ubiennykh, championnat de Russie féminin des moins de 18 ans, 2000

Diagramme 83

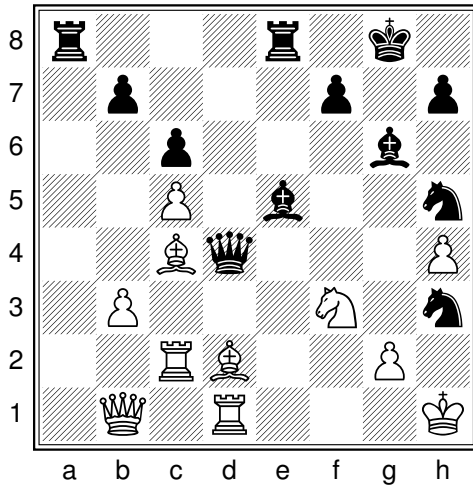
30... ♗xe5 31. ♗xe5 ♗xd3

Tomislav Paunovic - Gilbert Grimberg, Belgrade 1988

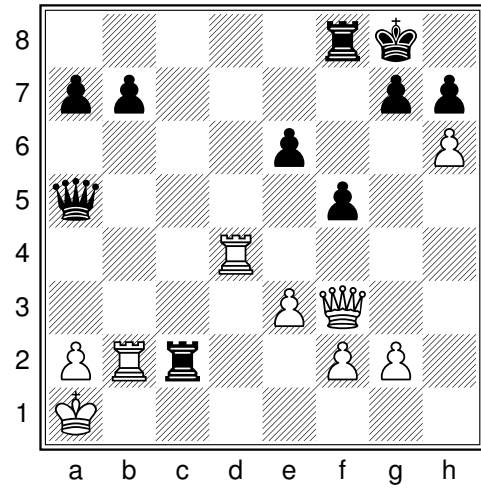
Diagramme 84

51. ♗xf7 ♗xf7 52. ♘xc8 1-0

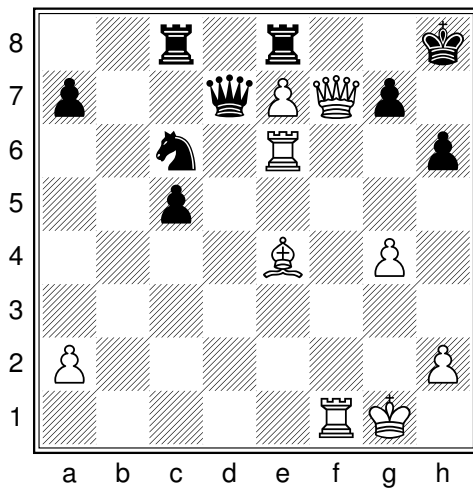
Viacheslav Ragozin - Alexander Kotov, championnat d'URSS 1940



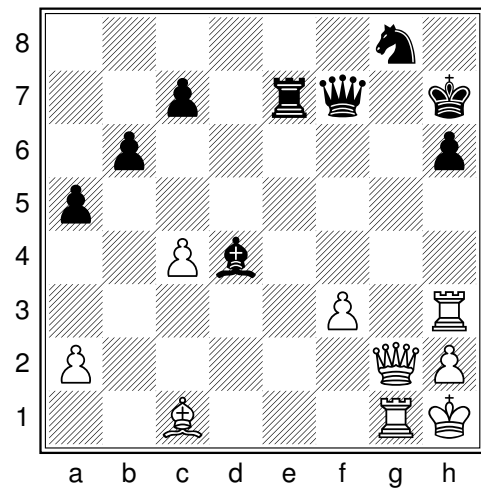
Diag. 85 - Trait aux Noirs



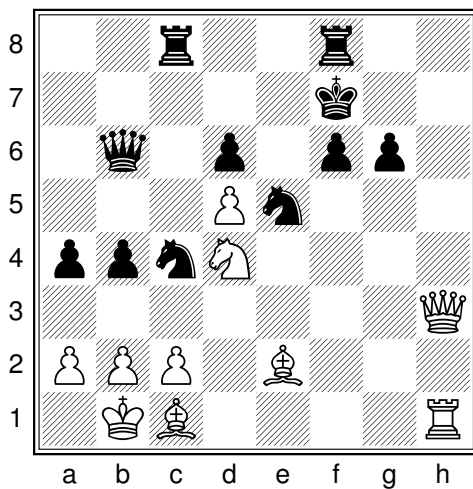
Diag. 86 - Trait aux Noirs



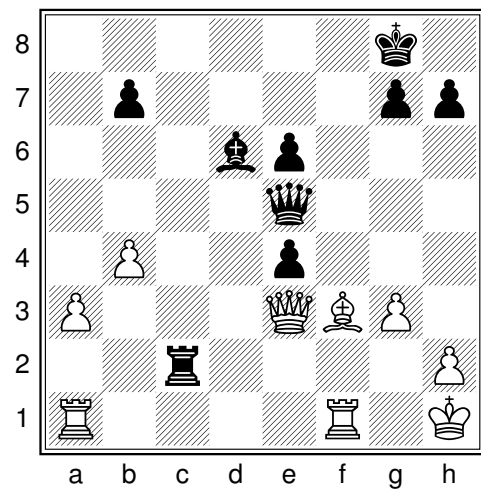
Diag. 87 - Trait aux Blancs



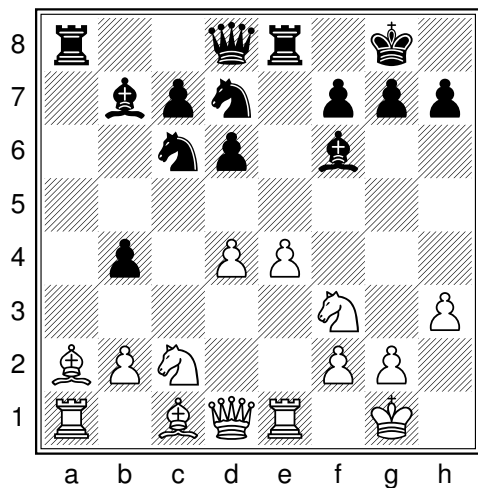
Diag. 88 - Trait aux Blancs



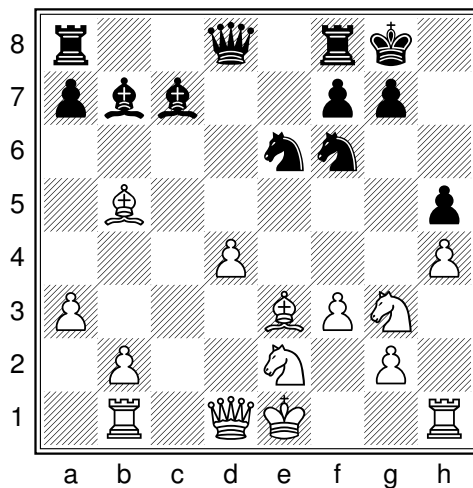
Diag. 89 - Trait aux Blancs



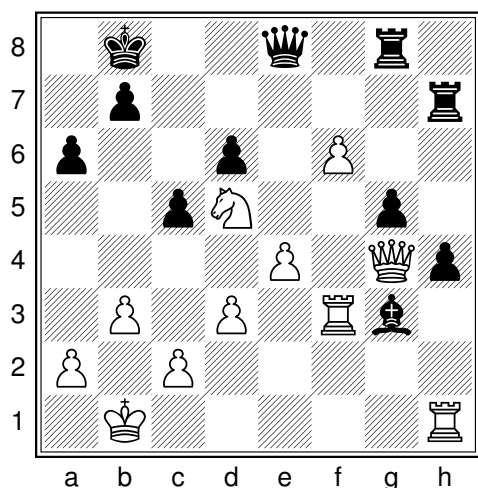
Diag. 90 - Trait aux Noirs



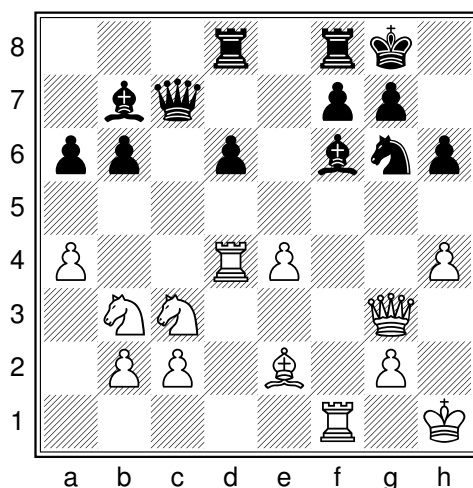
Diag. 91 - Trait aux Noirs



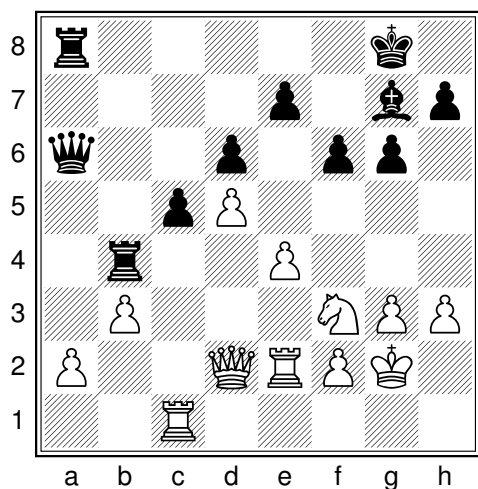
Diag. 92 - Trait aux Noirs



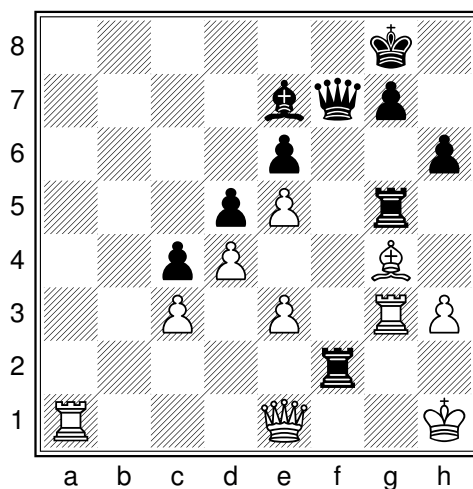
Diag. 93 - Trait aux Blancs



Diag. 94 - Trait aux Blancs



Diag. 95 - Trait aux Noirs



Diag. 96 - Trait aux Blancs

Diagramme 85

30...♔g1+ 31.♗xg1 ♗f2#

Roman Skomorokhin - Leonid Milov, Berlin 1994

Diagramme 86

25...♖c1+ 0-1 26.♖b1 ♔c3#

Luis Sosa - Rafael Emilio Espinosa Flores, Olympiades 2000

Diagramme 87

37.♖xh6+ g×h6 38.♔h7#

Goran Todorovic - Dragan Pantovic, championnat de Serbie par Ãlquipes, 2012

Diagramme 88

44.♔xg8+ 1-0 44...♔xg8 45.♖xh6#

Tung Ton That Nhu - Hafizulhelmi Mas, Kuala Lumpur 2006

Diagramme 89

33.♔e6+ ♔g7 34.♕h6+ 1-0 34...♔h7 ou 34...♔h8 sont suivis de 35.♕xh8#

Roberto Servat - Walter Arencibia Rodriguez, Mar del Plata 1990

Diagramme 90

24...♖xh2+ 25.♔xh2 ♔xg3+ 26.♔h1 ♔h2#

Jan Smeets - Daan Brandenburg, Internet 2011

Diagramme 91

16...♖xa2 17.♖xa2 b3 18.♖a1 bxc2

Viacheslav Bashkov - Jonas Barkhagen, 1991

Diagramme 92

17...♕xg3+ 18.♗xg3 ♔a5+ 19.♔d2 ♔xb5

Gregory de Fotis - Tegshsuren Enkhbat, Philadelphie 2000

Diagramme 93

37.♖xg3 1-0 37...h×g3 38.♖xh7

Walter Wittmann - Guenter Miniboeck, Vienne 1986

Diagramme 94

20.♖xf6 gxf6 21.h5 permet de gagner deux piÃlces contre une Tour et un pion

Marjan Crepan - Ivan Prpic, Senj 2008

Diagramme 95

25...♕h6 26.♔xh6 ♔xe2

Lanka Ravi - Semon Palatnik, New Delhi 1986

Diagramme 96

38.♕xe6 ♔xe6 39.♔xf2

Roland Scott - Gerard Oskam, Bromley 1920

